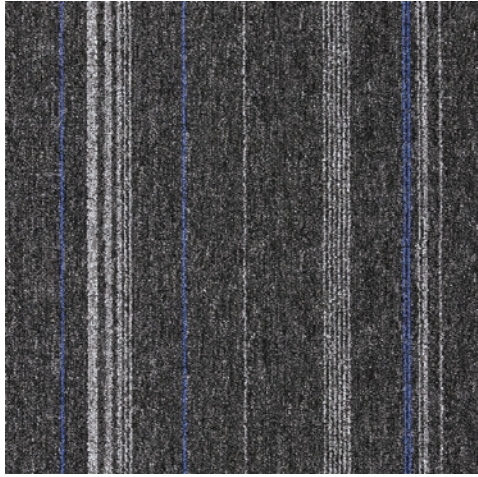


Match



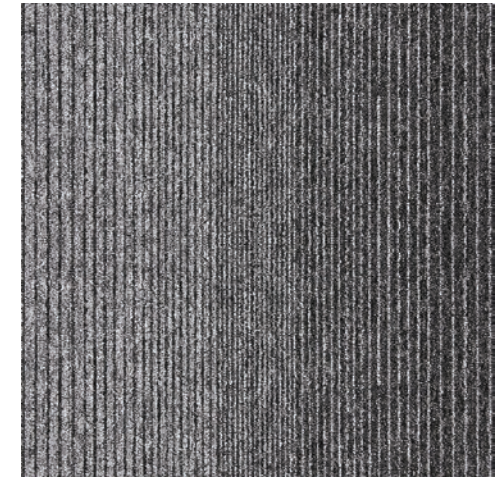
MT601



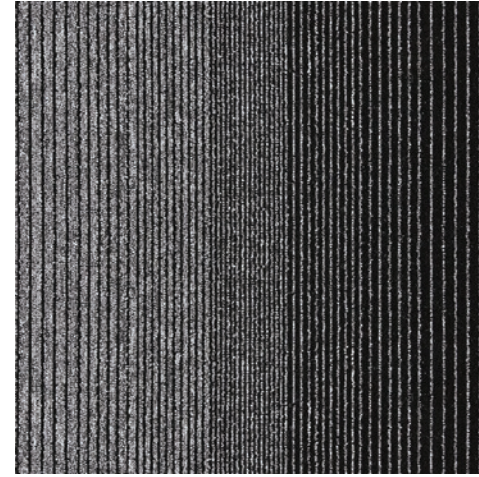
MT602



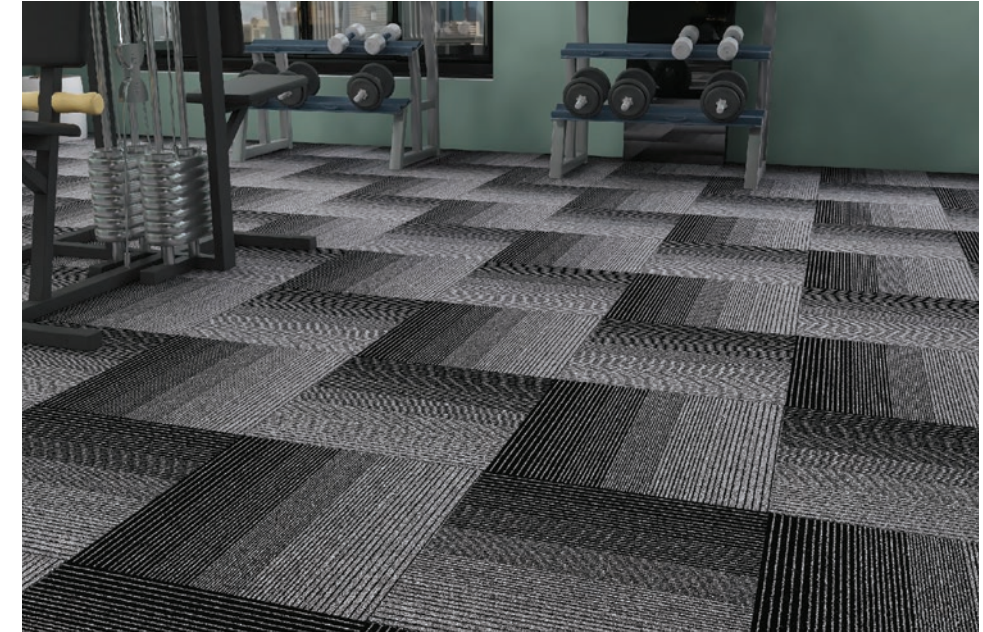
Linear



LN701

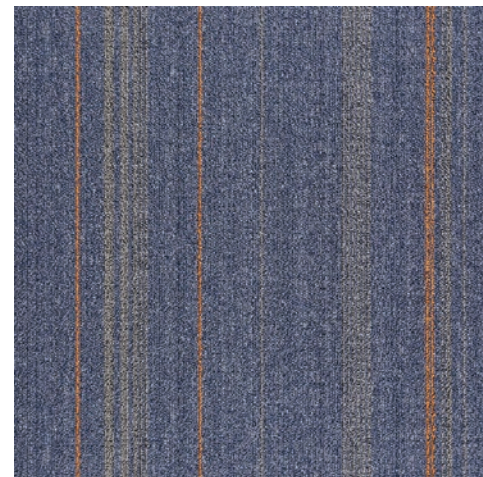


LN702

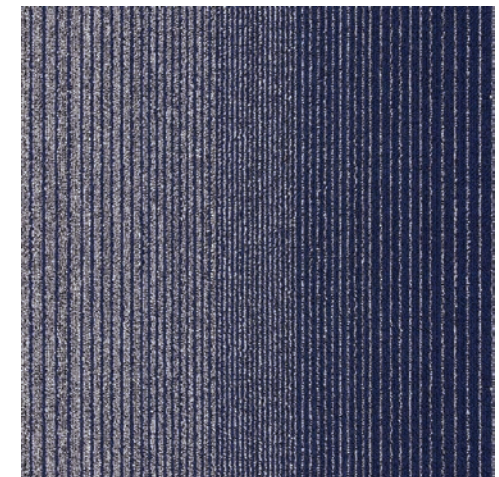


FLOORMART™

Match/Linear



MT605



LN705

Specification

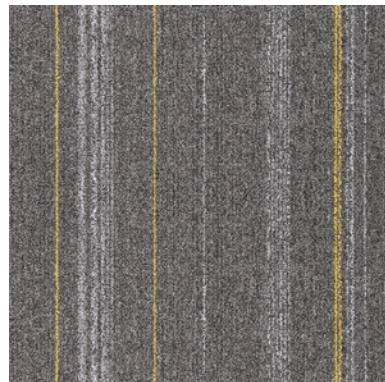
| | |
|--------------------|-------------------------------------|
| Product Name | Match / Linear |
| Pile Construction | Level Loop |
| Tufted Yarn Weight | 400g/m ² |
| Face Yarn Type | 100% Bulk Continuous Filament Fiber |
| Dye Method | 100% Solution Dyed |
| Machine Gauge | 1/10 |
| Primary Backing | Polyester Premium Fabric |
| Secondary Backing | Eco Bac |
| Pile Thickness | 3.5mm ± 0.5 |
| Total Thickness | 5.5mm ± 0.5 |
| Tile Size | 50cm x 50cm |

Performance Test

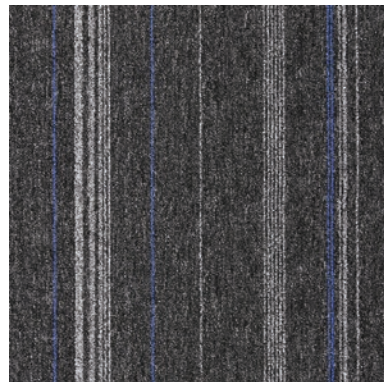
| | |
|----------------------------|---|
| Flammability | Pass GB 8624-2006 Pass GB/T 14768-93 |
| Smoke Density | Pass ASTM E-662 ≤450 DMC Pass GB 8624-2006 |
| Static Generation | Pass AATCC-134 Pass GB/T 18044-2000 |
| Colourfastness to Water | Pass AATCC-16E Pass Grade 4/5 ISO 105-X12 Pass BS EN ISO 105 E01:1996 |
| Colourfastness to Light | Pass AATCC-16E Pass Grade 5 ISO B02:1994E Pass BS EN ISO 105 B02:1999 |
| Colourfastness to Crocking | Pass BS EN ISO 105-X12:2002 |
| Tensile Strength Test | Pass ISO 13934-1 Warp 3112.9 |

Disclaimer

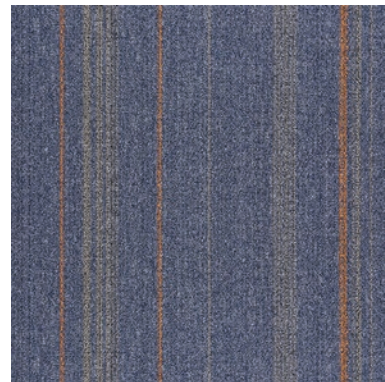
- This carpet is manufactured and sold for floorcovering use only.
- As with all carpets, colours are subject to dye lot variations.
- All carpet specifications reflect averages derived from product sample testing, are subject to normal manufacturing and testing tolerances and inherent pattern variances, and may be changed without notice.
- "Tufted Pile Weight" refers to total input weight of yarn used in tufting process, and processes such as tufting, shearing and carving will result in a lower finished yarn weight in purchased carpets.



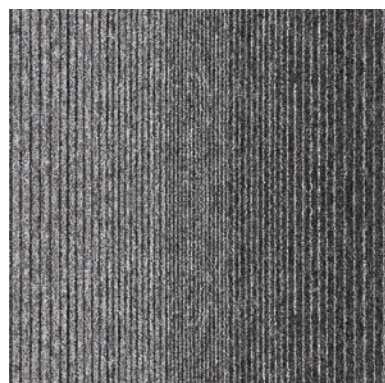
MT601



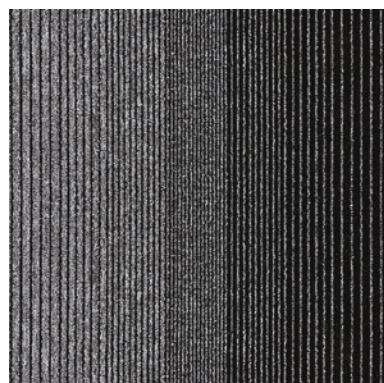
MT602



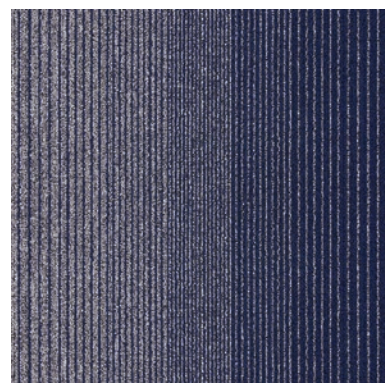
MT605



LN701



LN702



LN705

FLOORMART™

Match/Linear

FLOORMART™

Match/Linear