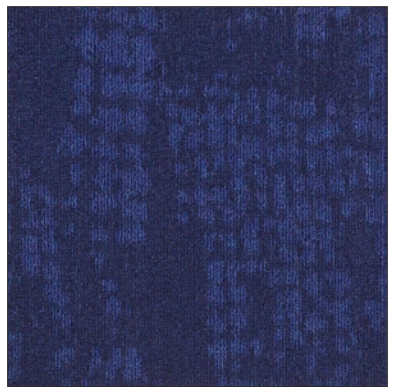
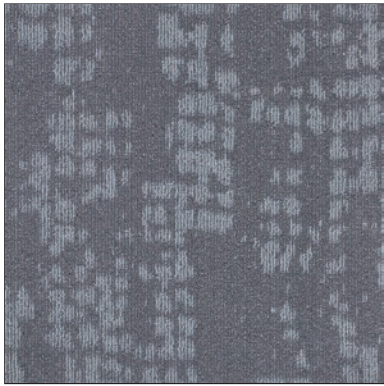


SA15WS4-01

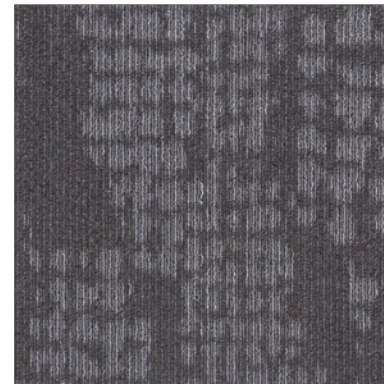
MODULAR



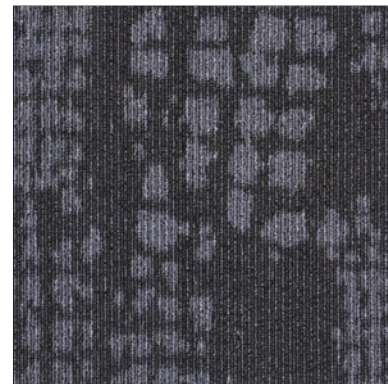
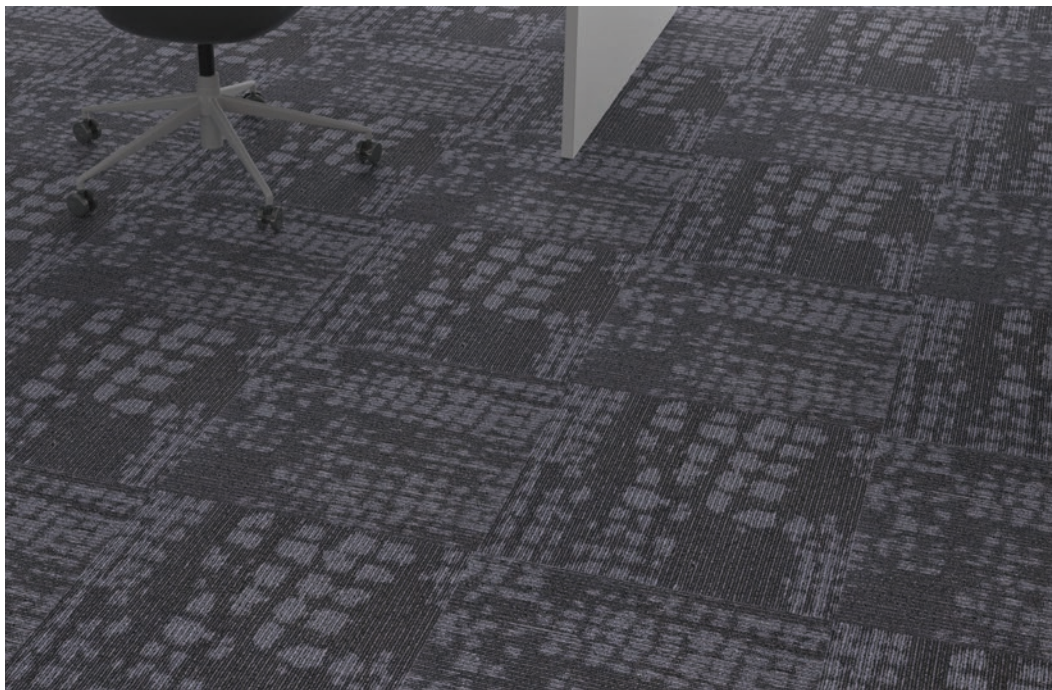
SA15WS5-04



SA15WS3-02



SA15WS2-05



SA15WS1-03

Saint

### Specification

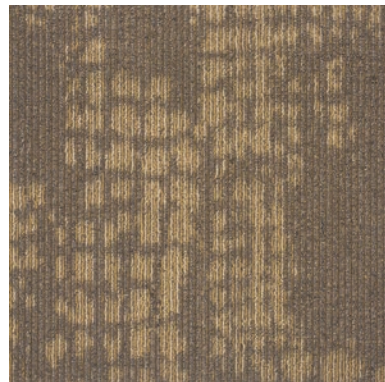
Product Name	Saint
Pile Construction	Texture Multi-Level Loop
Tufted Yarn Weight	520g/m <sup>2</sup>
Face Yarn Type	100% Bulk Continuous Filament Fiber
Dye Method	100% Solution Dyed
Machine Gauge	1/12
Primary Backing	Polyester Premium Fabric
Secondary Backing	PVC with Fibreglass
Pile Thickness	3.5mm ± 0.5
Total Thickness	5.5mm ± 0.5
Tile Size	50cm x 50cm

### Performance Test

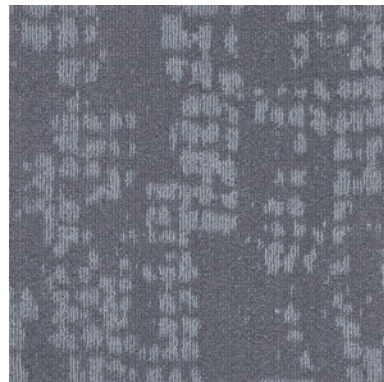
Flammability	Pass GB 8624-2006 Pass GB/T 14768-93
Smoke Density	Pass ASTM E-662 ≤450 DMC Pass GB 8624-2006
Static Generation	Pass AATCC-134 Pass GB/T 18044-2000
Colourfastness to Water	Pass AATCC-16E Pass Grade 4/5 ISO 105-X12
Colourfastness to Light	Pass BS EN ISO 105 E01:1996 Pass AATCC-16E Pass Grade 5 ISO B02:1994E
Colourfastness to Crocking	Pass BS EN ISO 105 B02:1999 Pass BS EN ISO 105-X12:2002
Tensile Strength Test	Pass ISO 13934-1 Warp 3112.9

### Disclaimer

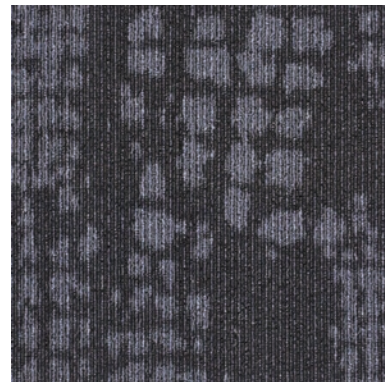
- This carpet is manufactured and sold for floorcovering use only.
- As with all carpets, colours are subject to dye lot variations.
- All carpet specifications reflect averages derived from product sample testing, are subject to normal manufacturing and testing tolerances and inherent pattern variances, and may be changed without notice.
- "Tufted Pile Weight" refers to total input weight of yarn used in tufting process, and processes such as tufting, shearing and carving will result in a lower finished yarn weight in purchased carpets.



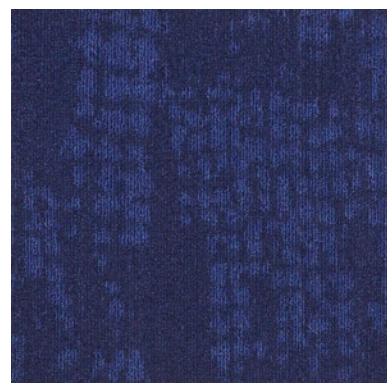
SA15WS4-01



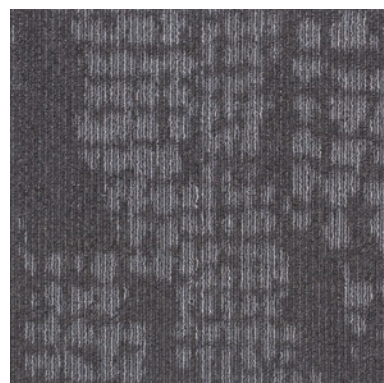
SA15WS3-02



SA15WS1-03



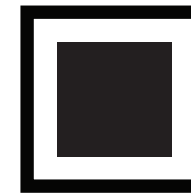
SA15WS5-04



SA15WS2-05



MODULAR



MODULAR

malaysia

Saint



Saint